



**SPROTT
SHAW
LANGUAGE
COLLEGE**

**VANCOUVER
VICTORIA
TORONTO**

CANADA

Welcome to SSLC!

SSLC is dedicated to your success. We are proud to support your educational goals and your journey towards an enriched life! With our flexibility to offer you as much or as little study as you need, and with many specialized courses, we have the right plan for you. We look forward to helping you achieve your goals!



What to expect

SSLC is excited for the chance to be part of your journey towards success, and we will do everything in our power to assist and support you during your time with us. You can expect:

Prompt, courteous service

Your time is valuable, and we do our best to respond quickly and efficiently. You can expect fast and friendly service from all of us at the SSLC family.

Flexibility & choice

Every student has different goals and dreams. With campuses in three cities across Canada, SSLC has the flexibility and course selection that will help achieve those goals. Study as little or as much as you need!

Supportive & knowledgeable advisors

Our advisors will work with you to determine what course best fits your goals and needs; they are also here to help you adjust to your wonderful new life in Canada!

Student-focused academic classes

With academic activities and instruction that focus on students' needs, all of our classes are designed with you in mind!

Dedicated, professional instructors

All of our instructors are certified by TESL Canada or other publicly recognized institutions with English language instruction programs. They are dedicated to your success.

Activities & culture

Along with your classes, SSLC provides you with the opportunity to participate in many exciting activities and cultural events that will enhance your learning experience.

International friendships

With students from all over the world, you have the chance to create new, international friendships that will last a lifetime!

A life-changing experience

With all that SSLC and Canada have to offer, you can expect to create unforgettable memories and experiences!

Join the SSLC Experience! Visit www.studysslc.com to get started

Vancouver

Considered one of the top five most liveable cities in the world, Vancouver has a wide range of options for you when you study here! Not only will you find Vancouver a diverse metropolis with a variety of people and cultures, but also a city that is exciting and energetic. Surrounded by world-class mountains and spectacular ocean views, Vancouver offers year-round sport and sightseeing options in addition to a thriving metropolitan lifestyle.

Must See Attractions:

1. Stanley Park & English Bay
2. Capilano Suspension Bridge
3. Grouse Mountain
4. Science World
5. Queen Elizabeth Park
6. Whistler & Blackcomb Mountains



Victoria

If you are looking for a truly Canadian experience, then this charming city is a perfect choice for you. The rich atmosphere of Victoria, the capital of B.C., will provide you with big city convenience and amenities along with a small town feel. Situated on gorgeous Vancouver Island, Victoria is a city of beauty surrounded by the serenity of nature. Once you study here, you may never want to leave!

Must See Attractions:

1. Butchart Gardens
2. Victoria Harbour
3. Whale watching tours
4. Afternoon tea at the Empress Hotel
5. Craigdarroch Castle
6. Royal BC Museum



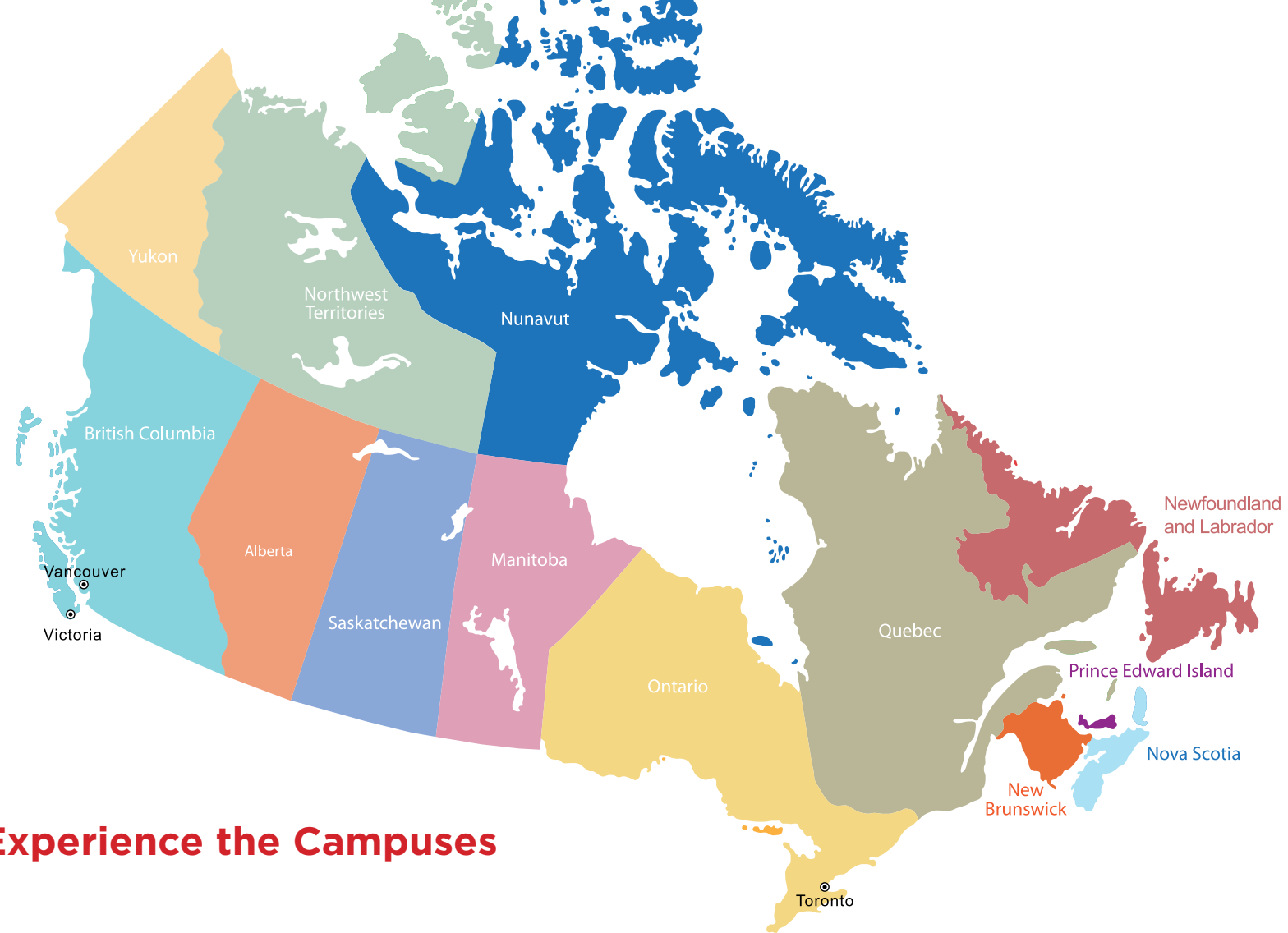
Toronto

As Canada's largest city, Toronto is a centre for business, sports, arts, entertainment and culture. Easily identified by North America's largest free-standing building, the CN Tower (553 meters high), this engaging city has everything you need. With an array of professional sports teams (NBA, NHL, MLB, MLS), a vibrant nightlife and culturally diverse neighbourhoods showcasing tasty cafes, restaurants and bars, there is never a dull day! Toronto provides endless opportunities for growth and fun!

Must See Attractions:

1. CN Tower
2. Niagara Falls
3. Professional Sports (NBA, MLB, MLS, NHL)
4. Royal Ontario Museum
5. Ripley's Aquarium of Canada
6. Casa Loma





Experience the Campuses

Vancouver Campus

- Located on Howe Street, close to the Pacific Centre Mall in downtown Vancouver
- Easily accessible by public transit (skytrain and bus)
- Wireless internet, student lounge and computer lab
- Microwaves, refrigerators and vending machines

Victoria Campus

- Located in downtown Victoria
- Walking distance from shops, restaurants, cafes and entertainment
- Wireless internet, student lounge, computer lab and microwaves
- Vacation programs and customized groups welcome all year-round

Toronto Campus

- Located near Yonge and Eglinton in bustling midtown Toronto
- Minutes away from shopping, cafes, restaurants and entertainment
- Public transit stops outside the campus
- Wireless internet, student lounge and computer lab
- Microwaves, refrigerators and vending machines
- Vacation programs and customized groups welcome all year-round



Experience English Your Way

English as a Second Language (ESL)

SSLC offers **TWO different ways** to learn English:

ESL: SKILL COMBINED (SC) (Toronto)	ESL: SKILL FOCUSED (SF) (Toronto, Vancouver, Victoria)
---------------------------------------	---

All skills combined into one well-balanced class:

- Grammar
- Listening
- Reading
- Writing
- Speaking

Concentrate on developing your overall level of English through communicative classes that enrich learning and produce fast results.

All skills separated into five intensive classes:

- Grammar
- Listening
- Reading & Writing
- Pronunciation
- Communication

Focus on developing different skills independently at various class levels, according to students' individual skill levels (flexible level system).

Choose your **HOURS** and your **COURSES**:

5, 10, 15, 20 or 25 hours per week

Hours	Choose Your Course
5	<p>ESL-SF: Choose 1 class from •Grammar •Listening •Reading & Writing •Pronunciation •Communication</p> <p>ESL-SC: Student can take an elective in the afternoon between 1pm-2pm OR 2pm-3pm</p>
10	<p>ESL-SF: Choose 2 classes from •Grammar •Listening •Reading & Writing •Pronunciation •Communication</p> <p>ESL-SC: Students can take 2 electives, from 1pm - 2pm AND 2pm-3pm</p>
15	<p>ESL-SF: Choose 3 classes from •Grammar •Listening •Reading & Writing •Pronunciation •Communication</p> <p>ESL-SC: Choose to study all skills in 1 class •Grammar •Listening •Reading & Writing •Pronunciation •Communication</p>
20	<p>AM: Choose to study either ESL-SF or ESL-SC</p> <p>PM: Take 1 class</p>
25	<p>AM: Choose to study either ESL-SF or ESL-SC</p> <p>PM: Take 2 classes</p>

For more information, visit www.studyssl.com/esl

ESL: Skill Combined (SC) Time Schedule

ESL: Skill Focused (SF) Time Schedule

ESL: SKILL COMBINED (SC) (Toronto)		ESL: SKILL FOCUSED (SF) (Toronto, Vancouver, Victoria)	
9:00-10:00	Grammar, Listening, Reading & Writing, Speaking, combined in one 3-hour class*	9:00-10:00	Grammar
10:00-11:00		10:00-11:00	Listening
11:00-12:00		11:00-12:00	Reading & Writing*
12:00-1:00	Lunch	12:00-1:00	Lunch
1:00-2:00	PM1	1:00-2:00	Pronunciation
2:00-3:00	PM2	2:00-3:00	Communication

* There are breaks between morning classes: 20 minutes in total.

** Students can register from a minimum of 5 hours per week to a maximum of 25 hours per week.

PM1	PM2
PM1 classes, depending on your level, may include: Vocabulary - The Essentials, Everyday Basics, Debating Hot Topics, Purposeful Speech, Building Blocks of Academic Vocabulary	PM2 classes, depending on your level, may include: Reading and Speaking Comprehension, Making Connections Through Language, Practical Writing, Expressive Dialogue, Current Events

Choose your Free Extra Classes and Workshops

(Applies to both SC & SF)

In addition to our regular classes, SSLC also offers FREE extra classes after school from Monday through Thursday. A variety of free workshops are also available.

FREE EXTRA CLASSES

SSLC extra classes are offered FREE to all students registered for 25 hours per week. Types of free extra classes may vary from campus to campus, and are subject to availability.

Examples: English Lounge (conversation class), Idioms and Slang, Speak-Up, Homework Club, Movies, Yoga Club, Guitar Club and more!

FREE WORKSHOPS

Types of workshops may vary from campus to campus, and are subject to availability.

Examples:

- Career Development Workshops - Perfect Resume, Interview Like A Pro, Toastmasters, Workplace Communication
- Academic Development Workshops - Success in University, Let's Talk Grammar, Preparing for a Master's Degree
- Business Leadership Workshops - Networking for Business, Utilizing LinkedIn, Power Speaking & Business Presentations



Joaquim
Brazil

Don't be shy and don't worry about making mistakes, so you can learn.



Kurumi
Japan

At SSLC, I can study at an appropriate level for me.



Anna
Brazil

The school and the homestay make you feel safe and welcomed. Have fun and enjoy.



Experience ESL

Teens Program [Vancouver Campus]

Our Vancouver campus offers full-time, year-round studies for teens (13-17 years old). The program offers studies in basic ESL skills such as grammar, reading, writing and communication. Additionally, our level 3 & 4 English classes will focus on academic content that will be applicable when studying at a Canadian high school (math, science, social studies, literature).

Teens	
Ages	13-17
ESL Studies	Grammar, Listening, Reading, Writing & Speaking
Academic Content	Science, Fine Arts, Math, Language Arts, Literature, Physical Education, Visual Arts, Career Education



High School Bridge Program [Vancouver Campus]

For young students who want to attend a Canadian high school, SSLC's High School Bridge Program is an excellent option. Our ESL classes with Canadian content will provide students the academic tools needed to succeed in school, while the guidance and support SSLC provides will help create a successful experience all around.

Family Program [Vancouver Campus]

At our Vancouver campus, we offer classes for adults and teens. For students 6 to 12 years old, we assist with registration in the children's ESL program at our sister school Vancouver International College right next to our Vancouver campus. This means that families can all study at the same time at the same location. Have fun improving your English skills and sharing a unique learning experience together.



For more information, visit www.studyslsc.com/esl

Experience University Academic English Preparation Programs

IEPE & EPE

Intermediate English for Post-Secondary Education (IEPE)

IEPE is the first of SSLC's two academic English preparation programs that ready you for a diploma or degree program at an English speaking post-secondary institution (college or university). This intensive program prepares you for the challenges of post-secondary education by developing and strengthening crucial, fundamental academic skill sets.

Program Length: 4, 8 or 12-week Certificate Program

Entry Requirements:

TOEFL iBT® 45-46, TOEIC® 550, IELTS 4.5 overall (with writing 4.5), or completion of SSLC ESL-SF Level 3 or ESL-SC Level 6, or a pass on our entrance exam.
All applicants are also required to write an essay and take an interview.

Successful Completion:

Completion of all required program components with an overall average of 80%



For more information, visit www.studyssl.com/university-college-pathway

English for Post-Secondary Education (EPE)

EPE is the official Pathway Program at SSLC. This program allows you to apply for select partner colleges and universities without having to take an official entrance test or possess other official test scores such as IELTS or TOEFL®. Much like IEPE, English for Post-Secondary Education focuses on preparing students for college and university.

However, it goes a step further; EPE also teaches you good study habits to ensure a successful university experience!

Program Length: 4, 8 or 12-week Certificate Program
(Must complete 12-week program to enter partner colleges and universities)

Entry Requirements:

TOEFL iBT® 61, TOEIC® 650, IELTS 5.5 overall (with writing 5.5), completion of SSLC ESL-SF Level 4 or ESL-SC Level 8, or a pass on our entrance exam. All applicants are also required to write an essay and take an interview.

Successful Completion:

Exit test score of 65% or higher and completion of all required program components with an overall average of 80% or higher.

SSLC Pathway Program Advantages

- Bypass English language entry requirements for select partner colleges and universities
- Small class sizes for optimum academic benefit
- Academic preparation covering all areas: reading, writing, speaking, vocabulary, study skills and note taking
- Access to experienced and helpful teachers, informative pathway advisors and knowledgeable academic advisors



For more information, visit www.studyssl.com/university-college-pathway

Experience University Pathways

SSLC can help you achieve your academic goals by assisting you with your university or college applications in Canada, United States or Europe. With our IEPE and EPE programs, along with our many partners and affiliated institutions, we can help you study what you want and where you want!

SSLC Pathway Benefits & Services

With our commitment to support your academic endeavours, SSLC does its best to provide you with the tools and services that will benefit your academic journey including:

- Free application assistance for SSLC students (This service is available for non-SSLC students for a fee)
 - Access to experienced and helpful teachers, informative pathway advisors and knowledgeable student advisors
 - Support for obtaining conditional letters of acceptance and letters of acceptance from partner universities and colleges
 - Access to many SSLC partner colleges and universities WITHOUT an IELTS or TOEFL® score
- Free additional Pathway support
 - Comprehensive academic training with our IEPE and EPE programs
- School tours and information sessions with a variety of universities and colleges
 - Additional learning opportunities including extra classes, workshops and seminars related to post-secondary skills
 - Guest speakers
 - Visits from college and university staff

Pathway Partners					
					
					
					
					
					

Pathway information subject to change.

For more information, visit www.studysslc.com/university-college-pathway

Experience Language Enhancement Programs

BE & PMM

Business English (BE)

BE is designed to develop your communication skills in everyday business and provide a foundation for further studies and career advancement in the business world. Business English brings you into a modern business environment where technology plays an important role in the day-to-day operations. The program will also enable you to read, write, understand, and discuss many important business-related topics and concepts using newspaper articles, textbooks, podcasts, and websites. As a bonus, SSLC's Business English program also includes aspects of the Cambridge Business English Vantage Exam, an internationally recognized qualification that provides practical, everyday English skills necessary for success in an English-speaking working environment and in international business.

Program Length: 4 to 8 week Certificate Program

Entry Requirements:

TOEFL iBT® 45-46, TOEIC® 550, IELTS 4.5 overall, completion of SSLC ESL-SF Level 3 or ESL-SC Level 6, or a pass on our entrance exam.

Successful Completion:

Completion of all required program components with an overall average of 70%

SSLC BE Program Advantages

- Become an effective communicator in a professional business environment
- Learn how to negotiate, conduct meetings and communicate in a clear and assertive way
- Participate in field trips and engage with professional guest speakers in business conversations



For more information, visit www.studysssl.com/course/business-english

Power Speaking & Modern Media (PMM)

PMM is designed to develop your speaking, communication and most importantly presentation skills through the lens of modern media. In this program, you will have the opportunity to discuss current events and examine the influence of media on the world around us all while bettering your English and building your self-confidence!

Program Length: 4 to 8 week Certificate Program

Entry Requirements:

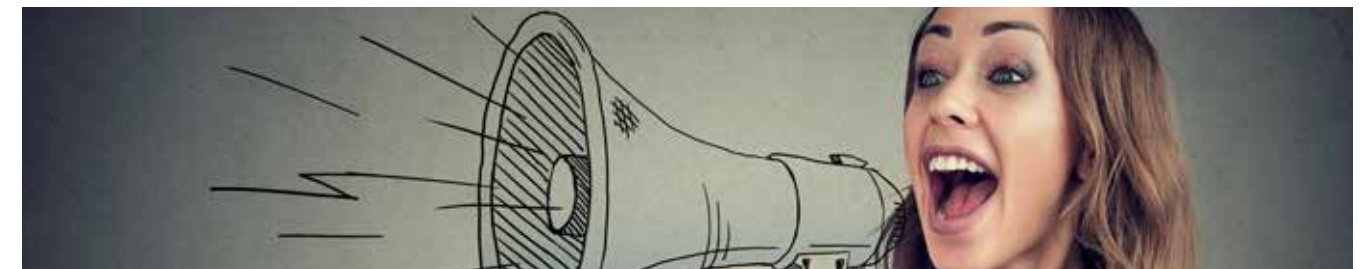
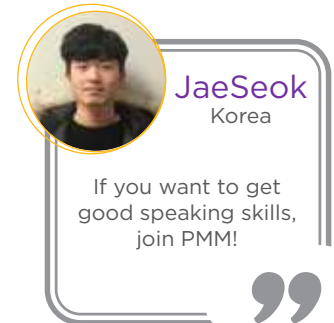
TOEFL iBT® 45-46, TOEIC® 550, IELTS 4.5 overall, completion of SSLC ESL-SF Level 3 or ESL-SC Level 6, or a pass on our entrance exam.

Successful Completion:

Completion of all required program components with an overall average of 70%

SSLC PMM Program Advantages:

- Field trips and outings
- Improved presentation skills, beneficial in any language
- Valuable experience in real-life situations, such as a job interview in front of a panel
- Become a more confident speaker



For more information, visit www.studysssl.com/course/power-speaking-modernmedia

Experience Language Enhancement Programs

CACCT & ETT

Communication for Airline Cabin Crew Training (CACCT)

CACCT emphasizes the specific use of English language in the airline industry, and is designed to prepare you for future employment as a flight attendant. Taught by a former airline crew member, the program equips you with the necessary skills to successfully land an airline cabin crew position.

Program Length: 4 or 8 week Certificate Program (10 hours / week)

Entry Requirements:

TOEFL iBT® 45-46, TOEIC® 550, IELTS 4.5 overall, completion of SSLC ESL-SF Level 3 or ESL-SC Level 6, or a pass on our entrance exam.

Successful Completion:

Completion of all required program components with an overall average of 70% and an attendance of 80% or higher

SSLC CACCT Program Advantages:

- Resume development, interview skills, and industry-specific vocabulary
- Customer service skills and passenger relations
- Emergency procedures



For more information, visit www.studyssl.com/course/communication-for-airline-cabin-crew-training

English Through Translation (ETT)

This specialized program has been developed specifically for Korean students learning English. It focuses on translating day-to-day language such as slang, idioms and commonly used expressions. Along with studies in sentence structure and vocabulary development through article translation, the lessons include audio and video dictation to practice listening, and improve pronunciation and intonation with intensive speaking and recording sessions.

Program Length: 4 to 8 week Certificate Program

Entry Requirements:

TOEFL iBT® 40, TOEIC® 470, IELTS 3.5 overall, completion of SSLC ESL-SF Level 2 or ESL-SC Level 5, or a pass on our entrance exam. Interview may be required.

Successful Completion:

Completion of all required program components with an overall average of 70%

SSLC ETT Program Advantages:

- Understand the nuances of English through Korean language translation
- Learn how to translate day-to-day language from Korean to English and English to Korean
- Develop practical English skills with small class sizes



Eunju
Korea

Don't speak Korean unless when necessary in class. Learn lots of new words.



For more information, visit www.studyssl.com/course/english-through-translation

Experience Test Preparation IELTS

International English Language Testing System (IELTS)

This intensive program is designed to improve your test score on the IELTS test (an entry requirement for post-secondary institutions). Not only will you develop the academic skills needed for success on the test, but also an understanding of the intricacies of the test. You will learn how to manage your time, how to scan and summarize information and how to understand the individual elements that make up the test. Your post-secondary dreams are within reach with SSLC's IELTS preparation classes.

Program Length: 4 to 12 week Certificate Program

Entry Requirements:


TOEFL iBT® 40, TOEIC® 470, IELTS 3.5 overall, completion of SSLC ESL-SF Level 2 or ESL-SC Level 5, or a pass on our entrance exam.

Successful Completion:

Completion of 70% of all required program components with an attendance of 80% or higher.

SSLC IELTS Test Prep Advantages:

- Training modules to help both prospective university students and prospective immigrants
- University placement advising if you wish to attend a North American university
- Flexibility to take any duration, from 4 to 12 weeks in the program



Mae
Japan

Try to do practice test on every Friday as if it were your actual exam.



Experience Vacation Programs for Youth

Global Leaders

Vacation programs and camps for youth are a specialty at SSLC! With programs in cities across Canada, we offer young students the opportunity to develop their English skills, make international friends, gain independence, become more confident and have an experience that will forever remain a valued part of their lives.

Our premiere vacation program, Global Leaders, aims to develop leadership skills and self-awareness in youth. Taking place at the world-renowned University of British Columbia (UBC)* Vancouver campus, students stay in residence and participate in leadership-focused morning classes, fun and educational afternoon clubs and outings, and evening activities designed to encourage team building in a fun and supportive atmosphere. Your students will have the time of their lives and will want the experience to continue forever!

* The use of UBC's name in this document is strictly for the purpose of identifying the location at which SSLC is hosting SSLC Global Leaders Summer Camp. SSLC has no affiliation with UBC, and UBC is not involved in or responsible for the quality, suitability, delivery or other aspects of SSLC Global Leaders Summer Camp in any way.

Global Leaders



Quick Info

Ages	9-17 years
Dates	June 30 - Aug 3, 2019
Duration	2, 3, 4 or 5 weeks (Arrivals on Sundays; Departures on Saturdays)

Highlights

- Accommodation at the University of British Columbia
- Leadership-focused curriculum with goal setting
- 2 half-day & 2 full-day activities each week
- 4-day / 3-night Rocky Mountain Tour
- TOEFL Junior® Test (13 to 17 years old only)
- Life-long friendships with students from all over the world

The activities include attractions in Greater Vancouver area such as Capilano Suspension Bridge, Grouse Mountain, Stanley Park, and many more. For the program schedule and more information, please visit www.studysssl.com



Experience Vacation Programs for Youth

SSLC Summer Fun



SSLC Summer Fun

SSLC offers young students an opportunity to improve their English, meet new friends, and stay in one of three amazing Canadian cities. With SSLC Summer Fun, students will study English in the morning and enjoy a variety of activities in the afternoon. The program is offered at our Vancouver, Toronto & Victoria campuses. Regardless of the choice of location, students will be able to explore Canadian environment and culture, and learn about practical use of English while making new friends. It is an experience your students will thank you for!

Quick Info	SSLC Summer Fun
Locations	Vancouver, Toronto, Victoria
Ages	14-19 years
Study	15 hours / week
Activities	6 activities / week
Accommodation	Homestay



Experience Vacation Programs for Youth

Winter Camps & Customized Programs



Winter Camps

Similar to our summer camps, SSLC offers young students the chance to experience the Canadian winter and all that it has to offer. Skiing, snowboarding, snow tubing and snowshoeing are just some of the great activities that students will combine with English studies to create a magical winter experience full of fun, friendships and education. Come join us!

Quick Info	SSLC Winter Camp
Locations	Vancouver, Toronto, Victoria
Ages	14-19 years
Study	15 hours / week
Activities	6 activities / week
Accommodation	Homestay

Customized Group Programs

At SSLC, we recognize that different groups require different schedules, English classes or activities. With groups as small as 10, SSLC can prepare a customized program to suit your needs. Contact us to start designing a unique program that's perfect for you and your group.



For more information, email: info@studyssslc.com



Experience the Activities

One of the benefits of studying with SSLC is the value added through the many exciting, entertaining and cultural activities we offer. Your campus activity coordinators along with our partner companies, Club ESL (Vancouver) and ISX (Toronto), plan a variety of student-focused activities and sightseeing tours for you to participate in. Each month a new activity calendar comes out. With so many choices, your life in Canada will be filled with exciting memories and opportunities as you further develop your English skills outside of the classroom. We look forward to being a part of your experience and creating life-long memories.



Eunju, Korea

“Learn a lot of words. We got to know millions of expressions. The teacher is so charming”



Bader, Saudi Arabia

“Victoria is the best place to live and study! The school has nice classrooms and the teachers are awesome! I enjoy the activities. They have a lot of variety. I really like the school and want to continue learning here as long as I can.”



Nita, Taiwan

“Take part in fun activities and you can meet new friends from around the world.”

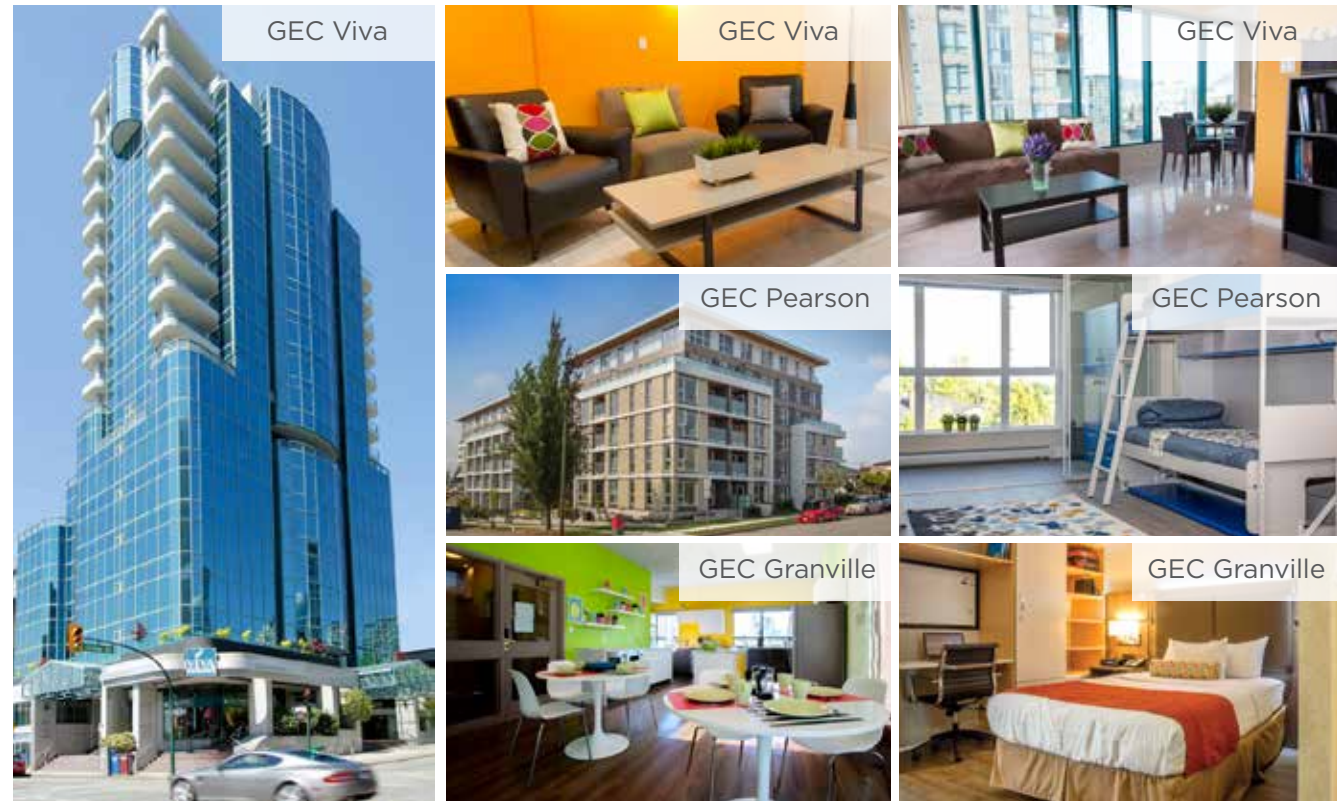


Experience Living in Canada

GEC Residences



With our partner, Global Education City (GEC), SSLC offers students coming to Vancouver the choice of independent living at one of the residences in downtown Vancouver or in the neighbouring city of Burnaby. These luxurious student buildings house elegant, fully furnished private and shared rooms in apartment suites. GEC Residences ensure that students enjoy their independent lifestyle while offering them a fantastic place to live. GEC Residences are available for our Vancouver campus only.



Homestay

One of the ways to truly experience Canadian culture is by staying with a homestay family. Homestays provide a great opportunity for students to become part of a Canadian family and develop English skills while enjoying Canadian life. Homestay option is available for all SSLC campuses.



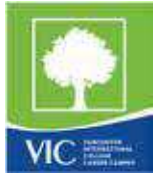
Thiago, Brazil

"My homestay family was very nice to me and made me feel like I was in my own home. It was such a good experience!"



Experience Career Choices

Vancouver International College Career Campus



If you are focusing on developing your career while studying in Canada, SSLC's sister school, VIC Career Campus (VIC-CC) is an excellent option. VIC-CC offers programs in the fields of English language teacher training, global business, translation and customer service for a variety of potential career paths. Take the next step towards your career goals at VIC-CC.

Teaching English to Speakers of Other Languages (TESOL)

- TESOL
- TESOL with Practicum
- TESOL for Adults
- TESOL for Adults with Practicum
- TESOL for Children
- TESOL for Children with Practicum
- TESOL for Middle School
- TESOL for Middle School with Practicum
- TESOL Advanced Online

Global Business

(Study and Work)

- Global Business Expertise (GBE)
- Advanced Global Business Expertise with Co-op (AGBE)

Customer Service

(Study and Work)

- Customer Service Professional (CSP)
- Advanced Customer Service Professional with Co-op (ACSP)

Translation

- Interpreting and Translation- Korean (IT-K)



Sprott Shaw College

Since 1903, Sprott Shaw College has turned thousands of students into successful professionals. Its mission is to offer competitive programs to meet the needs of the current economy and broader community, providing students with relevant skills for meaningful jobs in high-growth industries.



Programs Offered:

- Co-op Programs (in Marketing, Management, Tourism and Hospitality fields)
- Business & International Trade Programs
- Tourism & Hospitality Management Programs
- Early Childhood Education Programs
- Healthcare & Community Support Programs
- University Transfer Programs
- Post-Graduate Programs

For more information, please visit: viccc.ca / sprottshaw.com

Experience the Programs

Program Offerings Summary



Program	Acronym	Admission Requirements	Campus Offered
English as a Second Language: Skill Focused	ESL-SF	No	Vancouver, Toronto, Victoria
English as a Second Language: Skill Combined	ESL-SC	No	Toronto
Test Preparation: IELTS	IELTS	Yes	Vancouver, Toronto, Victoria
Academic English Preparation: Intermediate English for Post-Secondary Education	IEPE	Yes	Vancouver, Toronto, Victoria
Academic English Preparation: English for Post-Secondary Education	EPE	Yes	Vancouver, Toronto, Victoria
Language Enhancement: Business English	BE	Yes	Vancouver, Toronto, Victoria
Language Enhancement: Power Speaking & Modern Media	PMM	Yes	Vancouver, Toronto, Victoria
Language Enhancement: Communication for Airline Cabin Crew Training	CACCT	Yes	Toronto
Language Enhancement: English Through Translation (Korean language only)	ETT	Yes	Toronto
Vacation Program: Global Leaders	GL	No *age restrictions apply	Vancouver
Vacation Program: Summer Camps	N/A	No *age restrictions apply	Vancouver, Toronto, Victoria
Vacation Program: Winter Camps	N/A	No *age restrictions apply	Vancouver, Toronto, Victoria
Customized group programs	N/A	No *contact us for a quote	Vancouver, Toronto, Victoria

Program offerings are subject to change. Please contact us.



twitter.com/studysslc
facebook.com/studysslc
instagram.com/studysslc
youtube.com/c/studysslc

info@studysslc.com

Toronto

4th Floor -120 Eglinton
Avenue East Toronto, ON
M4P1E2
Canada
Tel: +1 416-486-6561

Victoria

#103-31 Bastion Square
Victoria, BC V8W1J1
Canada
Tel: +1 250-383-5464

Vancouver

5th Floor -549 Howe Street
Vancouver, BC V6C2C2
Canada
Tel: +1 604-678-8148

Subsidiaries of CIBT Education Group



IRIX DESIGN GROUP

SSLC



English Your Way



SPROTT
SHAW
LANGUAGE
COLLEGE

www.studysslc.com